

Patient Instructions

INTRODUCTION

Your physician has prescribed Zithranol™-RR, a prescription drug shown to be effective for the topical treatment of stable plaque psoriasis.

In order for Zithranol™-RR to work correctly and to ensure maximum benefits, the following instructions should be followed very carefully. Of course, as with any medication, always consult your physician if you experience any discomfort or unexpected reactions.

TO OPEN THE TUBE

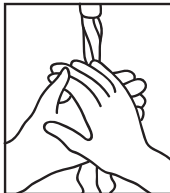
To open the tube, unscrew the cap and invert it to puncture the seal in tube. After use, replace the cap in the original position.

FOR THE SKIN



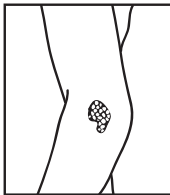
Step 1

Apply small amount to the psoriatic lesions only: avoid contact with normal skin. The cream must be rubbed in thoroughly and carefully until it no longer smears.



Step 2

Wash your hands immediately after application with cool or lukewarm water only.



Step 3

Leave Zithranol™-RR on the prescribed amount of time. Your physician may recommend a short contact period at first, and then gradually increase the contact time.



Step 4

After prescribed period of contact, rinse off thoroughly using cool or lukewarm water only. Hot water and soaps should be avoided as they will break down the patented delivery system in Zithranol™-RR and could cause product to stain or irritate.



Step 5

AFTER Zithranol™-RR has been thoroughly rinsed off, you can use soap and water to shower.

FOR THE SCALP



Step 1

Wash the hair with shampoo and rinse with water.



Step 2

Part the hair away from the psoriatic scalp lesion. Apply Zithranol™-RR and rub thoroughly into the psoriatic scalp lesions while the hair is still damp. Remove any unintended residue which may be deposited behind the ears.



Step 3

Wash your hands immediately after application with cool or lukewarm water only.



Step 4

Leave Zithranol™-RR on for the prescribed amount of time.



Step 5

Rinse hair and scalp with cool or lukewarm water only. Hot water and shampoo should be avoided as they will break down the patented delivery system in Zithranol™-RR and could cause product to stain or irritate.

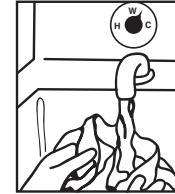


Step 6

AFTER Zithranol™-RR has been thoroughly removed, shampoo and water may be used on the hair and scalp.

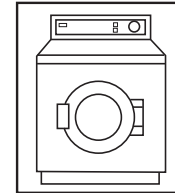
If Zithranol™-RR gets on Clothes, Bath or Shower:

CLOTHES



Step 1

First, rinse thoroughly with cool or lukewarm water only.



Step 2

Then wash them with detergent and water as usual. The suggested water temperature should be warm (not above 86°F) or cold.

BATH & SHOWER



Step 1

To reduce the possibility of discoloration to the bath or shower, always rinse well with cool or lukewarm water only.



Step 2

Use a suitable cleaner to remove any deposit left on the surface.

WARNINGS

Avoid contact with the eyes or mucous membranes. Exercise care when applying Zithranol™-RR cream to the face or in skin folds. Discontinue use if a sensitivity reaction occurs or if excessive irritation develops.

Please consult your physician if you have any questions concerning this product.

Patent Pending

 **ZITHRANOL™-RR**
anthralin | rapid release
microcrystalline
encapsulated cream, 1.2%

 **elorac** INC.
Vernon Hills, IL 60061